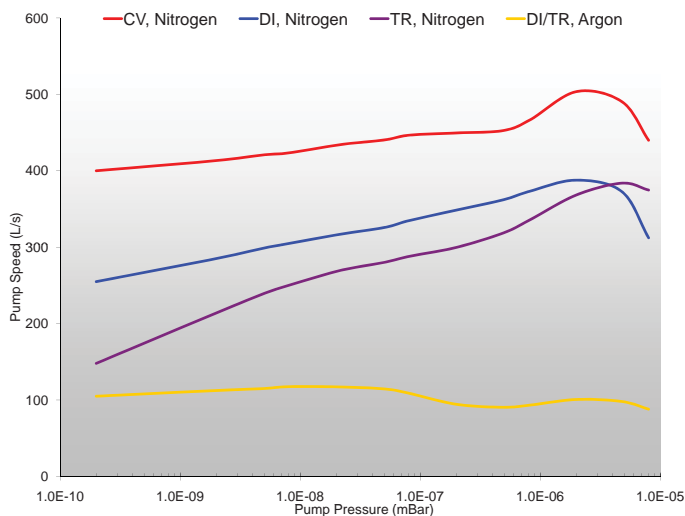


## TiTan™ 500T Ion Pump

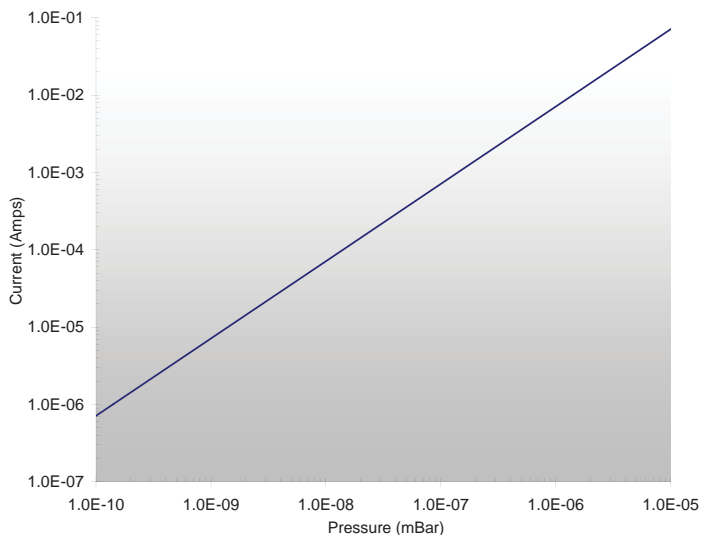


Specifications	Pumping Element		
	CV (Conventional)	DI (Differential)	TR (Triode)
Pumping Speed, (l/s, Nitrogen)	500	400	400
Starting Pressure, (mbar)	< 10 <sup>-4</sup>	< 10 <sup>-2</sup>	< 10 <sup>-2</sup>
Ultimate Pressure, (mbar)	Less than 10 <sup>-11</sup>		
Lifetime, average hours @ 10 <sup>-6</sup> mbar	50,000		
Temperature, max °C (with/without magnets)	250 / 450		
Inlet Flange	DN 150 (8" CFF)		
Weight, kg (lbs)	96 (212)		

**Pumping Speed vs. Pressure**  
measured in accordance with ISO/DIS 3556-1.2-1992

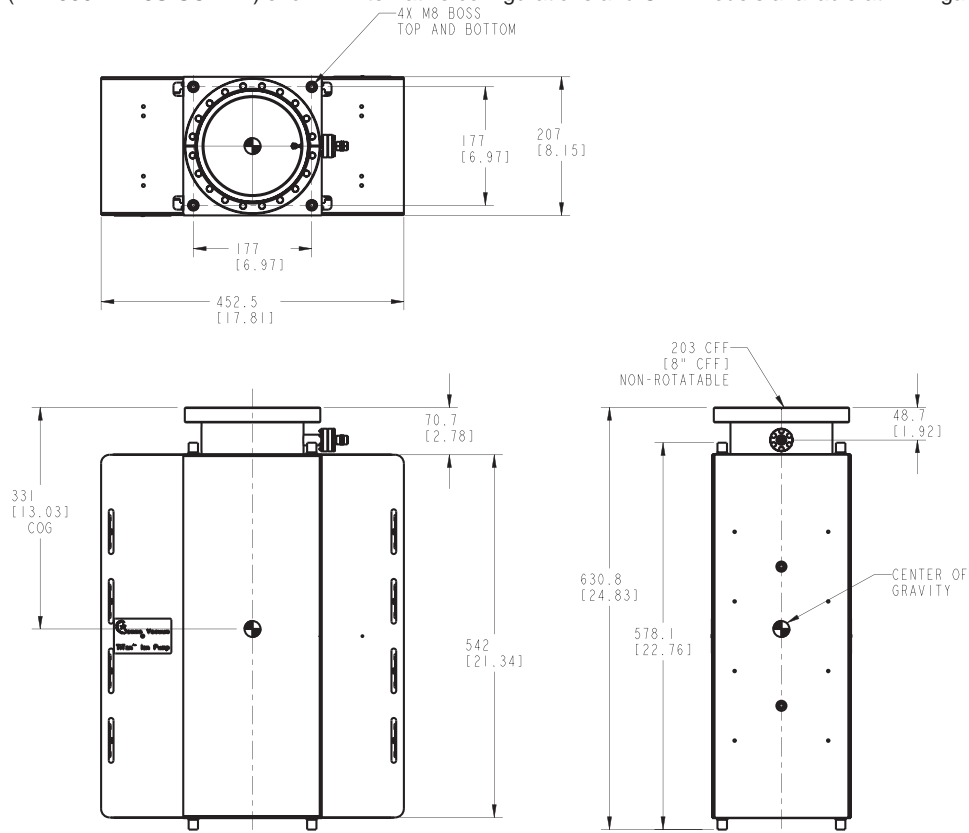


**Current vs. Pressure**



## Line Drawing

Single ended (PN: 500T-DI-8S-SC-N-N) shown. Alternative configurations and CAD models available at [www.gammavacuum.com](http://www.gammavacuum.com).



### Standard Options\*

Element Styles		Ports		Feedthroughs		Heaters		TSP/NEG (2nd Port Required)		
Options	CV	Conventional 100% Titanium	8S	Single DN 150 (8" CFF)	SC	SAFECONN™ 10kV SHV	N	No Heaters	N	No TSP/NEG
	DI	Differential 50% Titanium 50% Tantalum	8D	Double DN 150 (8" CFF)	OP	Perkin Elmer	110	110-volt 90-130 nominal	TSPA	TSP with Ambient Shield
	TR	Triode Slotted Titanium	8P	Sideport DN 150 (8" CFF)	OV	Old Varian	220	220-volt 200-240 nominal	TSPC	TSP with Cryoshroud
					VR	Starcell®			NEG	NEG SAES® D400-2 or as specified
				FI	Fischer					

\* Configured part numbers and pricing are available at [www.gammavacuum.com](http://www.gammavacuum.com). Contact us directly for custom engineered options.



2915 133rd Street West  
Shakopee, MN 55379 • USA  
(t) 800.237.3603 • (p) 952.445.4841 • (f) 952.445.7615  
[www.gammavacuum.com](http://www.gammavacuum.com) • [info@gammavacuum.com](mailto:info@gammavacuum.com)

Gamma Vacuum designs, manufactures, and services ion pumps, titanium sublimation pumps, and their controls.

We have grown to be the industry leading supplier through superior quality, delivery, service and innovation.

**Our staff and facility are dedicated to one thing; creating the purest vacuum environments on earth.**